



Whiteriver

wood for living

MOCHA

BARISTA COLLECTION
130 X 14/2.5 X 1092MM

ENGINEERED PRODUCT SPECIFICATION DATASHEET

PRODUCT DESIGN	INFORMATION
Board Size	130 x 14 x 1092mm
Product Code	D1014410
Species	European Oak (Quercus Petraea)
Floor Type	3 Layer European Oak
Construction	Engineered Plank
Top Layer	2.5mm
Surface Finish	Brushed & Matt Varnished / Lacquered
Treatment	Cream stained, heavy brushed.
Installation Profile	5g click glueless installation
Box Quantity (Boards per pack)	7 boards per pack
Pack Size	0.99m ²

GRADING CRITERIA	INFORMATION
Grade	Universal - Contains a mixture of prime, nature and rustic/character grading. Different species will have different characteristics e.g European oak grading tends to include its fair share of knotting so there will be a more limited amount of prime/nature boards within universal grading. The boards will contain both heartwood and sapwood and have a degree of natural colour variation as a result. Sapwood of up to 30% of the face area is allowable. Knots are filled to match the natural timber however may vary between boards and batches.
Filler	Allowed (All defects will be filled – small outbroken surface defects can occur)
Putty Colour	Dark Brown
Moisture Content	7% (+/-2%)
Gloss Level	10% (+/-5%)
Core	Pine
Bevel	4 sided micro bevel
Board Length	+/- 0.3mm
Board Width	+/- 0.2mm
Board Thickness	+/- 0.2mm
Bow (length) (max)	10mm per linear metre
Weight	500kg/m ³

TECHNICAL	INFORMATION
Slip	Dry : 55 Wet : 42 to BS7976-2
Thermal Conductivity	$\lambda = 0.14 \text{ W/mk}$
Thermal Insulation Value	$R = 0.10\text{m}^2 \text{ k/w}$
Class of Reaction to Fire	Dfl – S1
Brinell Hardness	Average HB 3.7
European Standard	EN 14342:2005 Wood flooring, EN 12524:2000 Building materials
Formaldehyde Emission	E1
Origin	Europe
CE marking / DOP	DOP WD_LF_005 Available on request with our office or can be downloaded on www.wrg.ie
EUTR	Responsibly sourced under EUTR regulations.

INSTALLATION & STORAGE	INFORMATION
Installation	Floating or Glue down installation only. Please refer to the Installation instructions included in each carton. Also available on www.wrg.ie
Underfloor Heating	Yes (water systems only) please ensure to follow manufacturing instructions.
Warranty	20 year structural warranty.
Usage	Indoor use only.
Storage	Store flat & on a stable surface. Place product in the room at least 72 hours before installation to allow for acclimatisation.
Air Humidity	40 - 60%

FLOOR CARE & MAINTENANCE

Room Conditions:

Timber likes pleasant room conditions similar to humans: A room temperature of 20° and humidity of about 50%. The recommended range for timber flooring should be 18-22° and humidity 40-60%. A humidity controller may be required. All rooms which have timber flooring should ideally be maintained at the above. For underfloor heating the surface temperature of the wood surface should not exceed 26°celsius.

Protecting your floor:

To preserve quality and beauty of your floor we recommend you use protective pads and caster cups under chairs and furniture legs. If there is a door leading outside from the room where you have installed your hardwood flooring, use a door mat to catch the dirt and absorb the humidity. Never use a rubber matt, with styrofoam or plastic backing. If you must move heavy pieces of furniture (e.g. refrigerator, piano, etc.), never slide them directly over the flooring. Instead, place a piece of carpet facedown between the legs and the flooring and pull the carpet to move the furniture. The floor should be monitored every 2-3 months to inspect the conditions of the surface.

Please refer to the Floor Care and Maintenance sheet included in each pack or alternatively visit www.wrg.ie for full care guidelines on caring for your floor correctly.

INSTALLATION & WARRANTY

All Whiteriver floors must be installed by a professional approved installer who has the necessary skills and will take each site circumstance into consideration. Our warranty is only valid on floors which have been installed by an approved flooring installer to BS8201. All floors must be installed as per our installation instructions. (Available on www.wrg.ie)



The grading image used in this datasheet is intended only as a guide of what the final product may look like. No rights can be taken from it. This technical data sheet was developed by Whiteriver Group, Cluide, Dunleer, Co Louth, Ireland, v. 2/22. At the time of issuing this datasheet, all information is correctly stated. The company reserves the right to update or amend the specifications of this product at any time without prior notice to third parties.



PLANK



PLANK INSTALLATION INSTRUCTIONS

These Instructions can be downloaded from our website - www.wrg.ie

Additional Instructions available at www.hardwood-installation.eu

Beautiful floors are a product of nature and therefore, not perfect. Hardwood floors are manufactured in accordance with accepted industry standards which permit a defect tolerance not to exceed 5%. The defects may be of a manufacturing or natural type. Prior to the installation of any hardwood flooring product, the installer must determine that the job-site environment and the sub surfaces involved, meet or exceed all requirements as stipulated in these installation instructions. We do not accept any responsibility for job failure resulting from or associated with sub surface or job-site environment deficiencies. The installer/owner has final inspection responsibility as to grade, manufacture and factory finish. He must use reasonable selectivity and hold out or cut off pieces with glaring defects, whatever the cause. When hardwood flooring is ordered, 5% must be added to the actual square metres needed as allowance for cutting waste and/or mis-manufacture. Should an individual piece be doubtful as to grade, manufacture or factory finish, the installer should not use the piece.

DO NOT INSTALL ANY QUESTIONABLE OR DEFECTIVE PRODUCT.

NOTE: IT IS RECOMMENDED THAT YOU EMPLOY A PROFESSIONAL FLOORING CONTRACTOR WHO OWNS A MOISTURE METER TO LAY YOUR FLOORING. IT IS THE INSTALLER'S RESPONSIBILITY TO CHECK THE MOISTURE OF THE CONCRETE AND OTHER CONDITIONS IN THE HOUSE BEFORE LAYING THE FLOOR

STAGE 1: Before You Start – Job Site Inspection

Acclimatisation and Storage

The floor should be stored horizontally in the room that is being fitted for at least 2 days before installation – the longer the better. The period required to acclimatise the flooring should be determined by taking moisture readings of the flooring and also from within the room. The fitter should aim for the two to be in equilibrium. Failure to acclimatize may cause excessive expansion and contraction. Do not open the packs prior to installation.

The temperature must be at least 18°C and the relative humidity between 40 – 60% for a minimum of 14 days prior to the installation of the flooring as well as during and after the fitting. The fitter should carry out these tests. Never bring flooring into a house which is not to the above conditions. It is vital that the packs are stacked correctly and horizontally. Place at least 3 laths between the ground and first row. The best way to stack the packs is to place laths between each row.

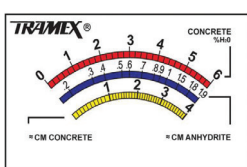
Sub-floor Evenness and Cleanliness

It is imperative to ensure that your cement or wood sub-floor is level (to within 3mm over a 2 metre straight edge) and that it is clean, dry and secure. Failure to do this may result in edge damage to the boards or noise related issues e.g. squeaking. It is the fitter's responsibility to ensure that the floor is level and clean. Any remaining residues or dirt should be removed.

IMPORTANT - Sub-floor Moisture

Cement Screeds (See Scale):

The moisture of the concrete floor must not be over 3% (2.0% CM) based on Tramex Concrete Encounter Red Scale in diagram) - this should be tested with an appropriate moisture meter e.g. Tramex Concrete Encounter. If the cement subfloor moisture level is too high, either wait until it is dry or use a PU Primer / Liquid DPM such as Seal Tight 100 which will seal moisture in cement floors up to 6% moisture.



Pump / Anhydrite Screeds:

For pump / anhydrite based screeds (usually 45-50mm thickness with underfloor heating), the moisture content level of the screed must be below 0.3% CM Moisture (Tramex Concrete Encounter Blue Scale highlighting CM % Moisture in diagram). Please note PU Primers or Liquid DPMs are not suitable for use over Pump / Anhydrite Screeds. Please also see Underfloor Heating Guidelines (Section 4)

Timber Subfloor:

Suitable timber subfloors include flooring grade plywood or OSB Grade 3 (Kiln Dried approx. 12%). Construction Plywood is not a suitable subfloor due to its high moisture content. If the timber subfloor has a moisture content higher than 12%, we recommend the use of Bitumen Paper which helps prevent moisture penetration from the timber subfloor. Bitumen paper is used at installer's/owner's risk.

Moisture Barrier

Always use builder's polythene or a suitable moisture barrier over cement floors for additional moisture protection. Overlap seams by 30cm and tape with duck tape (or similar waterproof tape), extend the polythene up the wall behind the skirting.

Inspect Flooring

Prior to installation, the fitter should inspect each board in daylight for any visible faults or damage and also check the colour, structure and finish. The installer/owner has final inspection responsibility as to grade, manufacture and factory finish. They must use reasonable selectivity and hold out or cut off pieces with glaring defects, whatever the cause. Once a board is fitted, it is deemed to be acceptable. It is the responsibility of the fitter and the end user to ensure that the grading of the floor is correct. Always select boards from different bundles to ensure an even appearance. No Claims Are Accepted Once The Flooring Boards Have Been Installed.

Longitudinal Bowing

In the case of engineered flooring, it is possible for some boards to be bowed on the length. This is more prone in higher humidity environments. These boards can be installed without any problem as longitudinal bowing is self correcting. Some boards may need to cut and used as a starter and end piece.

STAGE 2: Installation - ENGINEERED FLOORING

METHODS OF INSTALLATION

- 1: Floating Installation
- 2: Glue Down Installation
- 3: Installation over Under-floor Heating

Laying Direction

The laying direction normally depends on the main sources of light fall in the room e.g. French windows. The boards should run parallel with the entering light for best appearance. Ensure that the boards are always laid lengthways in narrow hallways. In the case of L, T or U shaped hallways they may require placing an expansion gap and changing the laying direction of the flooring.

1: FLOATING INSTALLATION

Suitable subfloors for a floating installation include cement screed, flooring grade Plywood or OSB Grade 3 (Kiln dried 12%). Construction Plywood is not a suitable subfloor due to its high moisture content. Please consult above section "Sub-floor Moisture" of these instructions for further information regarding correct job site moisture levels.

Important: Over Cement Screeds, always use polythene. A good quality underlay should be used underneath the flooring. The installer will require a heavy tapping block, PVA glue, clamp straps and woodworking tools to complete the installation.

Expansion: Wood is a living material. Always remember to leave an expansion gap of 10 -15mm at walls, pillars, stairs, doorways etc and around any fixed object. Fixed objects also include door stops and heavy items such as island or kitchen units. For any pipes: drill a hole with a diameter about 15mm larger than that of the pipe. It is recommended to place an expansion profile at all doorways. Do not fix any objects to a floating floor installation e.g. kitchen island unit fixed to subfloor through the flooring as this prevents the floor from expanding / contracting throughout the seasons. If there are very heavy objects on top of the flooring, then a glue-down installation is recommended.

The maximum area in which an engineered floor should be floated is 8 metres on the width and 20 meters on the length. The flooring must be separated at all doorways with suitable expansion profile. In larger areas, a suitable profile should be used or alternatively a glue-down/nail down installation should be considered.

Note: It is extremely important to blend planks from several cartons to ensure a good balance of colour and graining.

Limitations of Engineered Flooring

A floating engineered floor, despite its laminated construction, can expand and contract significantly, depending on how much the indoor climate changes during the year. In all doorways and large areas over 8m in width and 20 meters in length, an expansion joint must be used. When installing in T, L or U-shaped areas, separate the flooring area according to the room layout by using a proper profile system. You may need to change the direction the floor is running when doing this.

2: GLUE DOWN INSTALLATION

Suitable subfloors for glue down installation include cement screeds, ceramic tile, flooring grade plywood or OSB Grade 3 (Kiln Dried approx. 12%). Construction Plywood is not a suitable subfloor due to its high moisture content. All cement screeds must be properly cured, clean, dry and free of contaminants such like sealers and old adhesive residue. All subfloors must be structurally flat within industry standards of 3mm variance across 2mt. All sub-surfaces must have a sound but still 'rough' or porous surface in order to ensure a good bond with the adhesive. Old adhesive residues should be removed. A slick or sealed surface should be pre-sanded.

Glue down installation requires that a quality low water solvent free based adhesive be used, using a trowel and spread rate as specified by the adhesive manufacturer. The recommended adhesive for most installations is Griptight 50 PRO PLUS Adhesive or equivalent. See adhesive manufacturer's installation instructions for specific rules and guidelines regarding installation procedures and acceptable subfloors. Any questions regarding the acceptability of a concrete slab or any other type of subfloor or subfloor coating for application of an adhesive, is the sole responsibility of the adhesive manufacturer and the flooring contractor. Remove wet adhesive immediately as it can be very difficult to remove once cured. The recommended trowel is a 5.5mm serrated V Notch trowel (TKB B9) to ensure maximum coverage and a good bond between the subfloor and wood flooring. Larger notch trowels will result in less m2 coverage per kg.

Expansion: Always remember to leave an expansion gap of 10 - 15mm at walls, pillars, doorways or fixed objects etc and around the entire perimeter. For pipes: Drill a hole with a diameter about 15mm larger than that of the pipe. In the case of solid flooring or large areas of engineered flooring, it may be necessary to leave additional expansion through the floor as well as around the perimeter. It is the fitter's responsibility to calculate what additional expansion may be required.

1: Begin installation along the longest wall, or an outside wall, which is most likely to be straight and square with the room. At a minimum of 3-4 points, measure out from the wall 1 board width (including the tongue) and also include the expansion gap of 10 - 15mm (For narrow boards, it may be necessary to measure 2 board widths from the wall). Snap a chalk-line connecting these points, parallel to wall and perpendicular to adjacent walls. Since most walls are not square, you may have to trim the edge of some planks along the walls. Prior to installing flooring, we highly recommend that a straight edge be firmly secured along the chalk line as a guide and to prevent the planks from shifting during installation. Alternatively, the first row can be face nailed with finishing nails into a wood subfloor or spring nailed into a concrete sub-floor (Be careful there are no water pipes running underneath).

2: Spread adhesive from the chalk line/straight edge out to approx the width of two planks using a trowel size according to the adhesive manufacturer's recommendations. Using the longest and straightest board possible, install your first plank with the tongue facing away from the wall along the chalk line/straight edge and secure into position. NOTE: Proper alignment is critical. Misaligned starter rows can cause side and end gaps.

3: When you have the starter row completed, you can start the next row. When the first two rows are straight and secure, spread 700mm to 900mm of adhesive across the length of the room. Never spread more adhesive than can be covered in 30 to 45 minutes (This time may vary depending on quality of adhesive being used). Check for a close fit at all end and side joints. Continue to install planks. Any badly bowed or twisted boards should be cut and used as a starter and end piece. Weights may be required to be placed on the floor in certain areas to ensure full contact until the adhesive is set.

4: Remember to leave an expansion gap of 10 - 15mm between the flooring and walls.

5: When you get to the far wall, you will likely be required to cut the final row in width to fit against the wall. Do this by laying a plank in position and scribing a line on the plank (Don't forget to leave your expansion space of 10 - 15mm from the wall). Cut planks for the last row and install. Go back to the beginning of the installation and remove the straight edge. Spread adhesive on to exposed subfloor and position the final 1-2 rows into place. Remove all expansion spacers at wall and any temporary face nails before applying trim mouldings / skirtings.

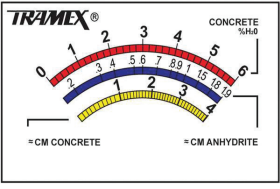
6: Allow adhesive to cure for at least 24 hours before permitting foot traffic or moving furniture onto floor. If the floor is being sanded afterwards, the adhesive must be allowed to cure for a minimum of 48 hours prior to sanding

Note: It is extremely important to blend planks from several cartons to ensure a good balance of colour and graining.

Note: It may be necessary to leave weights on flooring boards which are pushing up to ensure full contact with the subfloor while the glue cures. This is normal practice and these weights can be removed once the glue has fully set.

3: UNDERFLOOR HEATING

Our engineered floors are suitable for use over underfloor heating. Please follow below guidelines and information. It is very important that the moisture content of the subfloor which your floor will be laid onto is at the correct moisture level. To avoid cracks in new subfloors, you need a natural drying time of approx. one week per cm thickness of the screed. You can turn on the heat after the above has been achieved. Raise the temperature by 5 degrees per day till you reach maximum capacity and leave the heating on for 14 days. This is important as a relatively small moisture percentage can cause movement issues with your floor.



screed prior to any installation. The temperature below the floor must never exceed 26 degrees and the maximum difference of temperature per 24h is 5 degrees Celsius. There are 2 types of installation:

Floating Installation Recommendations

(Please follow below guidelines and floating installation instructions):

- 500 Gauge Polythene – over cement floors
- 2mm Cork Underlay or 2mm Heat Master – lowest heat transfer resistance.

Glue Down Installation Recommendations

(Please follow below guidelines and glue down installation instructions):

- Sealtight 100 PU Primer (If Cement Moisture is above 2.0% CM but less than 4.0% CM (< 6% on red scale below)
- Griptight 50 PRO PLUS Flexible Adhesive Glue

Note: For a glue-down installation, please turn heat off / to minimum 2 days before installation. You can turn on the heating system again two days after installation - again with maximum increments of 5°C per day.

We recommend that a high quality flexible glue (suitable for U/F Heating) such as Griptight 50 PRO PLUS Adhesive is used for glue down installations.

IMPORTANT:

RETAIN SEVERAL LEFTOVER PLANKS FOR POSSIBLE FUTURE REPAIRS

STAGE 3: Care of your floor

Room Conditions

Timber likes pleasant room conditions similar to humans; a room temperature of 20°C and humidity of about 50%. A humidity controller may be required. All rooms, which have timber flooring, should ideally be maintained at the above.

Protecting your floor

If you must move heavy pieces of furniture (e.g. refrigerator, piano etc.), never slide them directly over the flooring. Instead, place a piece of carpet face down between the legs and the flooring and pull on the carpet to move the furniture.

In the event of a proven manufacturing defect, the companies or sellers total liability shall under no circumstances exceed the value of the defective product. The company or seller shall not in any way be responsible for any additional consequential costs or losses.

If you are unclear regarding any of the above instructions, contact your local supplier.

CARING FOR YOUR PREFINISHED FLOOR

Prefinished floors are among the easiest floors to care for. The finish consists of resistant, UV-hardened acrylic varnish. It is formaldehyde-free and environmentally friendly. We recommend cleaning and maintenance as follows:

REGULAR CARE

Dry cleaning:

It is usually sufficient to dry-clean prefinished surfaces with a mop, brush or vacuum. Heel streaks or grease stains can be easily removed with clean & green® active.

Damp cleaning:

For protection of the prefinished surface a treatment is necessary. Your floor should be cleaned regularly depending on the wear and tear of the surface with clean & green® natural diluted in water. Add ½ dosage cap of clean & green® natural to 5 litres (1.3 gal.) of water. Then wipe the surface with a well-wrung, slightly damp cloth. Don't clean the floor surface too damp, always avoid letting water stand on the surface. By polishing the floor with a cloth afterwards, you can optimize the shine of your floor's surface. Steam cleaning machines are not suitable for cleaning prefinished flooring.

INTENSIVE CARE

Damp cleaning:

As the floor will be subject to high traffic, the floor surface will need to be deep-cleaned periodically, depending on dirt build-up. Please use clean & green® active for deep cleaning. Add ½ dosage cap of clean & green® active to 5 litres (1.3 gal.) of water. Then wipe the surface with a well-wrung, slightly damp cloth. Do not clean the floor too damp, always avoid letting water stand on the surface. If required, repeat the process.

Refreshing:

To optically refresh the floor and improve durability, we recommend that you use Clean & Green AquaShield. Start by thoroughly cleaning the floor (dust-free). We recommend Clean & Green Active for this job. Clean & Green AquaShield is applied on diluted with a rectangular/square cotton cover mop. Evenly apply the AquaShield in overlapping lines. Wait about two hours before subjecting the floor to traffic and load. The application of Clean & Green AquaShield can lead to changes in the gloss level.

BASIC PROTECTION

In maintaining the appearance of your prefinished floor it is always beneficial to use protective felt pads under chairs and table legs. A further recommendation is to use the polycarbonate mats under chair wheels at areas of extreme concentration and wear.

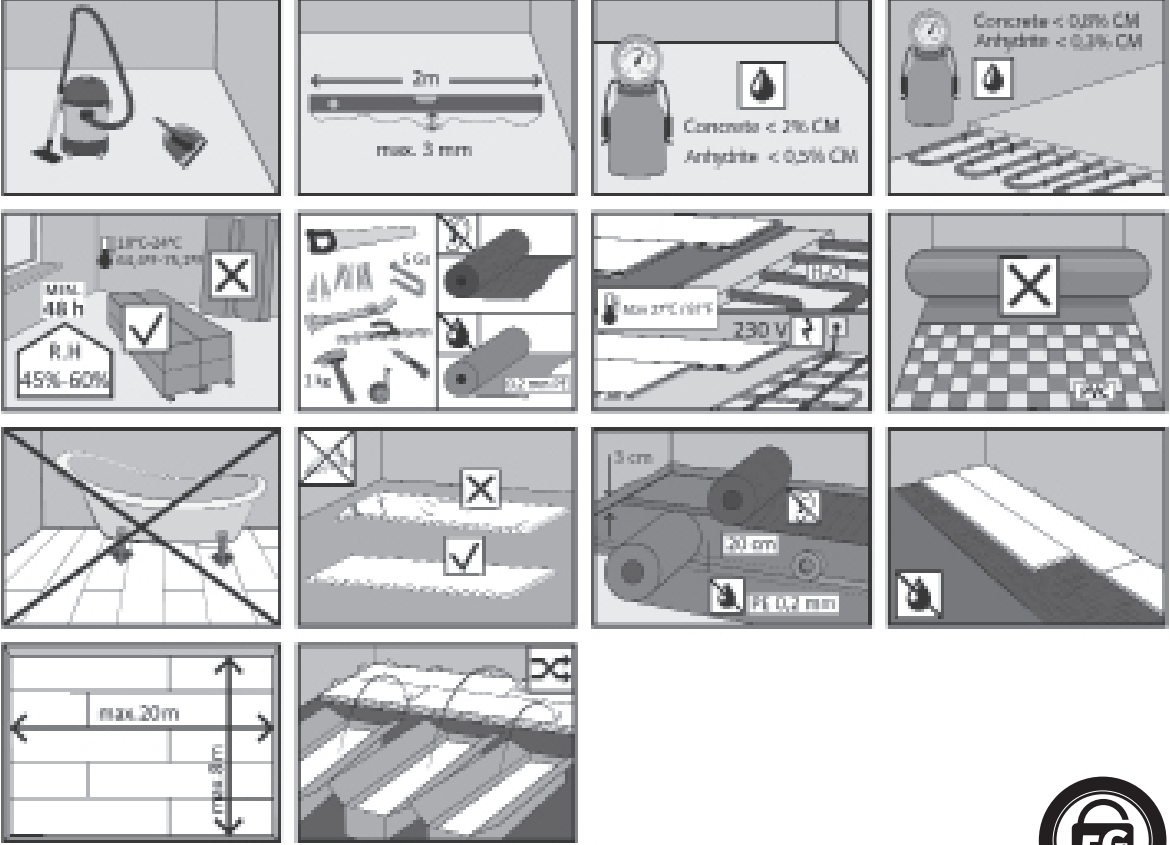
ENTRANCE BARRIER MATTING

We recommend that good quality entrance barrier mats are used at all external entrances to the hardwood flooring to collect grit and moisture from the underside of footwear. We strongly recommend that at least 2 - 3 foot falls are allowed for. Vacuum and clean the mat regularly. If you must move heavy pieces of furniture (e.g. refrigerator, sofa etc.), never slide them directly over the flooring. Instead, place a piece of carpet face down between the legs and the flooring and pull on the carpet to move the furniture.

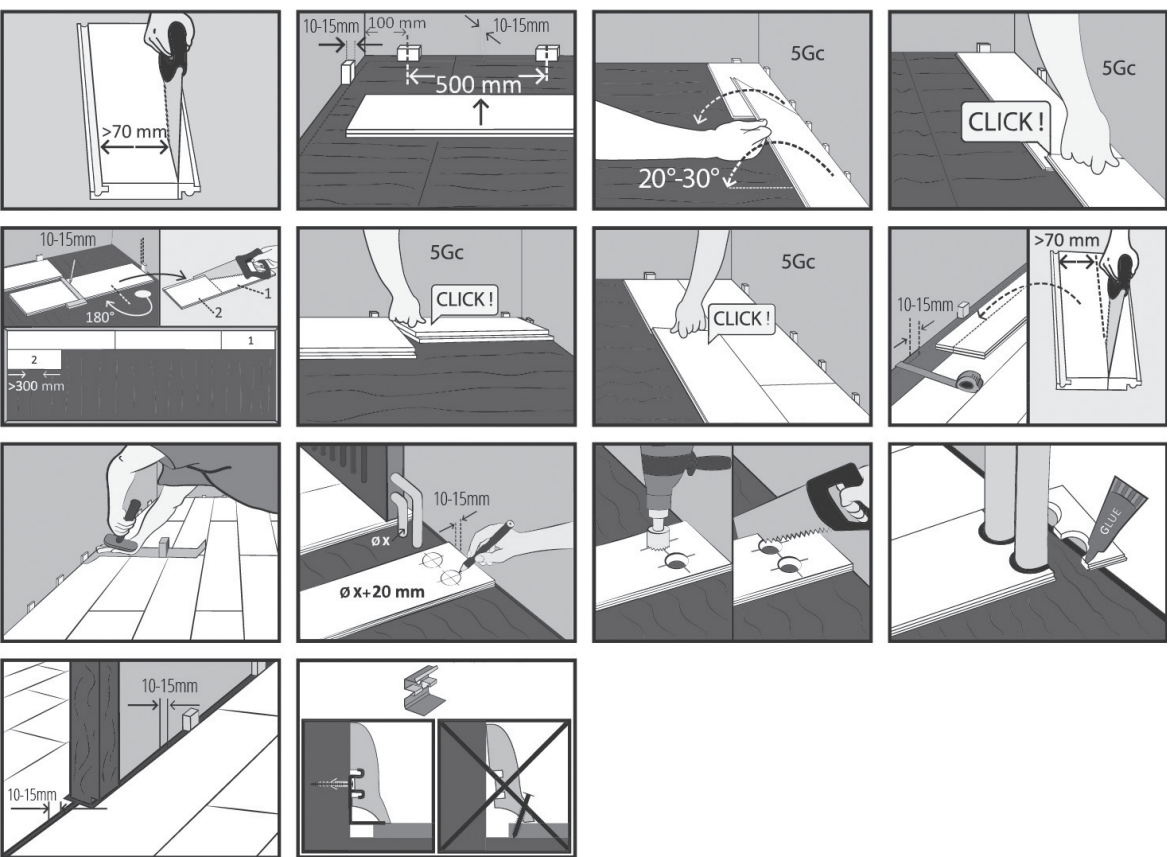
SPILLAGES

Engineered floors have a level of water resistance; however damage can occur if spillages of liquid onto the surface are not wiped up immediately. Extra coats of site applied lacquer will increase the water resistance of the floor. However it will not be waterproof.

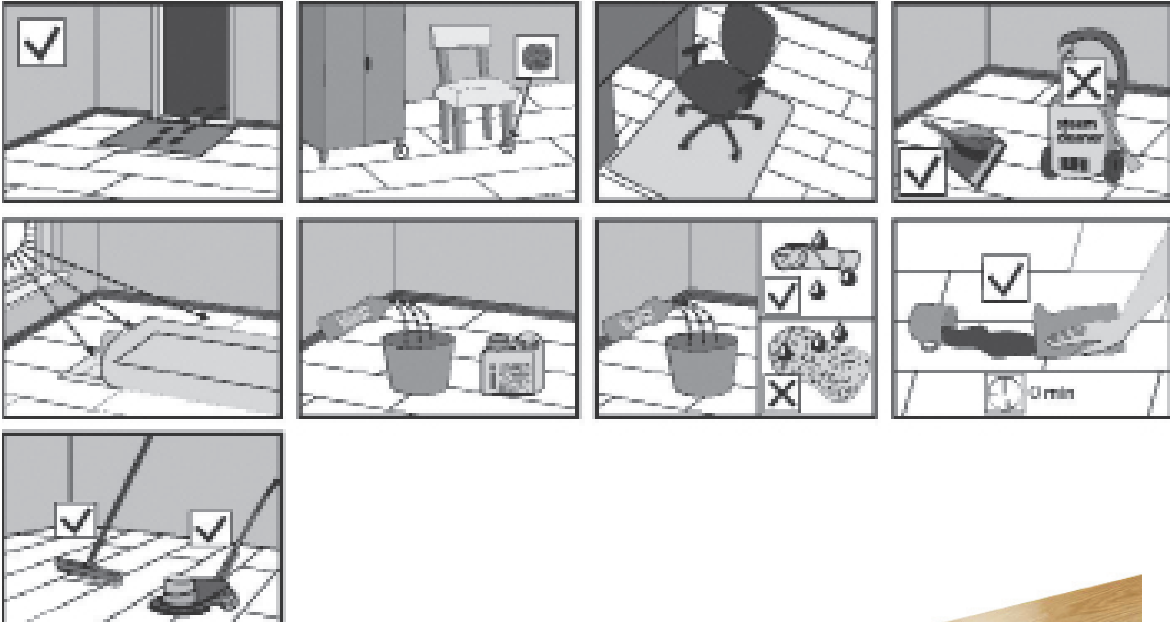
PREINSTALLATION



BARISTA PLANK INSTALLATION



CAUTION



1. Top Layer

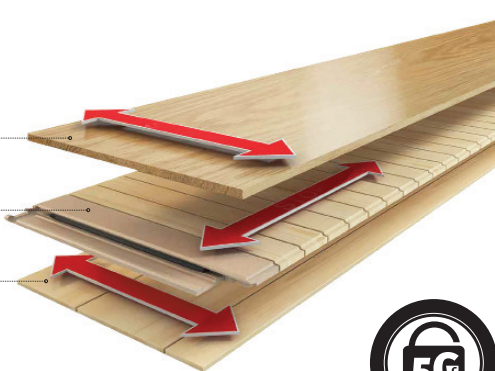
Selected European Oak protected with 5 coats of lacquer.

2. Middle Layer

Pressed laterally to the top layer which restricts natural movement for stability.

3. Bottom Layer

Pressed laterally in the opposite direction to the middle layer for further stability.



Barista Plank features a 5G click system which is suitable for floating or glue down installation.



DOP WD_LF_005

EN 14342: 2005 www.wrg.ie
Wooden floors; multilayer parquet elements (EN 14342)



Fire Reaction	Standard EN-14342:2005	Dfi - s1
Average Minimal Density		500 kg/m3
Minimal Thickness		10mm
Formaldehyde Emission		E - 1
Thermal Conductivity		0.14W/m*k
Biological Durability		NPD

WHITERIVER GROUP BARISTA ENGINEERED FLOORING WARRANTY

- Whiteriver Group as the importer and distributor of Whiteriver Barista Engineered Flooring provides a quality warranty on the floorboard in accordance with the terms described in the present warranty card.
- The Guarantor's responsibility for the warranty granted covers physical defects resulting from causes attributable to the product.
- The party authorised by the warranty is the Purchaser who meets the conditions stipulated by the present warranty.
- The party authorised and making use of the present warranty hereby declares that they understand and accept its content.
- The Guarantor guarantees to the original Purchaser (hereinafter referred to as "Purchaser") that the floorboard will be free from manufacturing defects for the warranty period.
- The Guarantor draws the Purchaser's attention to the fact that deciduous wood applied to the top layer of the Barista Floorboard is a natural product, in which natural differences in grain, colour, knot size and other natural features of wood may occur. The floor owner/installer should carry out an appropriate selection of floorboards and reject or cut off unwanted floorboard elements before installation.

Object of the Warranty:

- The warranty applies to wooden floorboards of glued three-layer structure (the Product). The warranty period runs from the date of purchase of the Product and amounts to:
- 20 years for the Barista 207 x 14 x 2200mm Plank Range.
- 20 years for the Barista 180 x 14 x 2200/1800mm Plank & 3-Strip Range.
- 20 years for the Barista 130 x 14 x 1092mm Short Plank Range.
- 20 years for the Barista 130/110 x 14mm Herringbone Range.
- 20 years for the Barista 130 x 14 x 725mm Chevron Range.
- 5 years for Products (regardless of collection or series) installed in public facilities.

The Guarantor confirms that its Products meet the requirements of the technical standards for layered wooden floors and are suitable for use for their intended purpose.

- The warranty covers
- The durability of floor surface layer when used normally and as intended.
- Structural durability of individual Product elements.
- Quality of the finish of parts (dimensions, matching of parts) in accordance with Standard EN 13489 "Wood Flooring - Multi-layer Parquet Elements"

Warranty Terms & Conditions:

- This warranty is only valid if the Purchaser notifies the Guarantor of the alleged defect before the warranty period expires.
- In order for the Product to be covered by the warranty, it is necessary to follow the rules and recommendations concerning storage, installation, care and operation of the Product, contained in the installation instructions enclosed with each package
- The basis to exercise the rights provided for in this warranty is the proof of purchase of the Product.
- It is recommended that the Product is installed by qualified professionals, who have the appropriate equipment and parquet laying knowledge.
- These warranty conditions apply exclusively to the Purchaser.
- The Purchaser undertakes to follow the installation, care and maintenance instructions for Barista wooden floors.
- The Purchaser and the Installer are liable for inspecting the Product prior to its installation in accordance with the industry guidelines, in particular for checking: the type of finish, type of wood and dimensions in relation to the purchase order and for checking for any visible defects. The Guarantor shall not be liable in case of installation of the Product with visible defects or the Product inconsistent with the Purchaser's purchase order.

Cases Not Covered by Warranty

- When buying a product made of the natural raw material such as wood, the Purchaser should be aware of the possibility of minor visual variations between the natural wood colour, grain pattern, amount or natural characteristics of wood (such as knots) as shown in the sample display or photographs included in the Guarantor's marketing materials, and the products offered for sale. Colour variations resulting from the natural structure of wood, and differences in the distribution or frequency of natural features of wood between the Guarantor's pattern book or catalogue photographs, and the product bought by the Purchaser are not deemed as Product defects.
- In addition, the provided warranty does not cover:
- Changes in the surface layer of the Product resulting from normal use and from natural wear and tear and abrasion.
- Mechanical damage or scratches caused by cleaning, maintenance or use in a manner inconsistent with the Installation Instructions and the conditions of use of lacquered or oiled floors
- Changes in the colour of the wood caused by sunlight, intense lighting or aging processes of the wood and/or the finishing coat.
- Defects resulting from incorrect installation or use of the floor in conditions inconsistent with those contained in the Installation Instructions (Installation instructions are included with each product package and are also available at www.wrg.ie ;
- Damage to the Product installed on the surface with the use of underfloor heating with parameters inconsistent with those contained in the Installation Instructions, as long as this had an impact on the damage
- Missing filling in knots in brushed floorboards, which are a feature of this type of finishing of the Product's surface layer.
- Changes in the surface layer of the Product resulting from normal use and from natural wear and tear and abrasion.
- A Product which was installed despite visible defects, (Do not install boards with visible defects. Visible defects are those defects which are visible on the top layer of the floorboard or which prevent installation in accordance with industry standards. Boards with visible defects must be put away by the installer prior to or during installation and reported to the point of sale to enable the supply of replacement floorboards),
- Creaking of wooden floors due to the natural properties of wood.
- Modification or repair of the Product by the User, if the work has not been agreed in writing with the Guarantor.
- Mechanical damage caused during transport, except for transport carried out by or on behalf of the Guarantor.
- Damage to the floor due to settlement of the building or uneven subfloor
- Damage caused by improper care or the use of improper care products
- Damage caused by staining (e.g. spilled liquids), scratches or dirt on the surface layer (e.g. caused by moving furniture, failure to replace worn felt pads under furniture feet, animal claws, use of unsuitable footwear), changes in gloss or indentations on the wooden floor surface (e.g. caused by falling objects on the wooden floor surface)
- Damage caused by using the Product in microclimatic conditions (e.g. temperature, relative humidity) not in accordance with the Installation Instructions.
- Effects of uneven light reflection on the installed floor which cannot be measured or which are visible only under specific lighting or at a specific angle (visual inspection of the installed wood floor is carried out in a standing position under natural lighting conditions)
- Cracks and gaps between the boards as a result of natural swelling and shrinkage of the wood as a result of changes in humidity.

Conditions at the installation site

- The Guarantor shall specify the conditions at the installation site relating to temperature, subfloor humidity and air humidity in the Installation Instructions included in each package of the Product and available at www.wrg.ie
- The Installer is obliged to observe the rules of installation specified in standards and industry specifications describing the conditions for commencement of parquet flooring works and their execution.

Reporting Defects

- Complaints should be submitted in writing or by e-mail within one month from the date of disclosure of the alleged defect, describing the grounds for the complaint in as much detail as possible.
- The complaint may be reported to the Seller from whom the Product was purchased or directly to the Guarantor. The complaint should include the proof of purchase of the Product.
- In case of a complaint directly to the Guarantor, it should be sent to the address: Whiteriver (WRG) Ltd, Cluide, Dunleer, Co Louth, Ireland, A92 V8YN.

Methods of complaint consideration

- In order to verify the legitimacy of the complaint, the Guarantor reserves the right to inspect the complained floor in the place of its installation or storage, at a previously agreed time.
- The Guarantor shall notify about the manner of handling the complaint in writing or by e-mail.
- If the complaint is considered justified, the Guarantor may, at his own discretion:
 - Replace the defective Product with a defect-free one,
 - Remove defects found free of charge or cover the documented cost of removing the defect,
 - Pay financial compensation in the event that the removal of the defect would be impossible or would require excessive costs, taking into account the value of the defect-free Product and the type and significance of the defect found.

Conditions for the Use of Wooden Layered Floors

- The conditions for the use of wooden layered floors can be found in the Installation Instructions included in each pack of floorboards and on the website www.wrg.ie

CARE AND MAINTENANCE **LACQUERED / UV**

Room Conditions

Timber likes pleasant room conditions similar to humans; a room temperature of 20°C and humidity of about 50%. A humidity controller may be required. All rooms, which have timber flooring, should ideally be maintained at the above.

LACQUERED / UV LACQUERED

Prefinished floors are among the easiest floors to care for. The finish consists of resistant, UV-hardened acrylic lacquer. It is formaldehyde-free and environmentally friendly. As with all floor finishes eventually the surface will wear down and require refinishing. To prolong the lifespan of the floor it is important to use the recommended maintenance products below as it provides ongoing protection to the floor surface.

Higher traffic / heavier use areas will require more frequent use of the Master cleaner and Master care to extend the lifetime of the surface. The floor should be reviewed regularly and maintained for signs of excessive wear and appropriate action should be taken to avoid deterioration of the finish. If there are other building works taking place after installation the floor should be covered to protect the finish. Please see the reverse of each Woca product for full usage instructions. There are also detailed video instructions available at www.wocadenmark.com/video

CLEAN (REGULARLY)



Master Cleaner

Avg. Coverage: 400m²/L

Effectively removes everyday dirt and grime as well as making the surface stronger and more resistant to liquid spillages. As the cleaner leaves a thin smooth film layer, the floor will start to withstand everyday dirt.

REJUVENATE (AS REQUIRED)



Intensive wood cleaner

Avg. Coverage: 200-300m²/L

This is strictly for preparing wooden floors for further treatment. Intensive wood cleaner is efficient at removing stains caused by dirt or grease whilst also helping to open the wood to receive further treatments.



Master Care

Avg. Coverage: 60m²/L

Helps to reduce the visibility of small scratches, increases the resistance of the surface and provides effective protection against wear. This extends the lifetime of the surface. The product can be used as required because it does not build up a thick coating.

We recommend using Master Cleaner for regular cleaning of your lacquered floor. Woca Master Care is to be used when your floor is in need of refresher treatment.

Protecting your floor

To preserve quality and beauty of your floor the following guidelines should be followed.

- Use protective pads and castor cups under chairs and furniture legs. Use good quality polycarbonate mats under wheeled office chairs.
- We recommend that good quality entrance barrier mats are used at all external entrances to the hardwood flooring to collect grit and moisture from the underside of footwear.
- Never use a rubber mat, with Styrofoam or plastic backing.
- For moving heavy furniture place a piece of carpet face down between the legs and the flooring and pull on the carpet to move the furniture.
- We would advise that during installation / other building works that the timber floor is covered with a heavy duty breathable floor protection roll / sheets to protect the finish.
- Do not apply adhesive / decorators tape directly to the floor finish.

Product	Code
WOCA Master Cleaner 1L	F2010098
WOCA Intensive Wood Cleaner 1L	F2010006
WOCA Master Care (Matt) 1L	F2010099

Please see the reverse of each Woca product for full usage instructions

Declaration of Performance

In accordance with the construction products regulation (EU) 305-2011/574-2014



- 1 Unique identification code of the product type:**
Engineered flooring boards according to EN14342:2005+A1 (Wood flooring)
- 2 Type, batch or serial number or any other element allowing identification of the construction product:**
Engineered flooring produced for indoor use
- 3 Intended use(s) of the construction product, in accordance with the applicable harmonized technical specification, as foreseen by the manufacturer:**
For use as floor covering in buildings (see EN14342 according to the manufacturer's specification)
- 4 Name, registered trade name or registered trade mark and contact address of the manufacturer in accordance with article 11, paragraph 5:**
Whiteriver (WRG) limited
Cluide,
Dunleer
Co. Louth
Ireland
- 5 Name and contact address of the authorized representative:**
Not applicable
- 6 Systems of assessment and verification of constancy of performance:**
System 3
- 7 In case of a declaration of performance concerning a construction product covered by a harmonized standard:**
- 8 Declaration of performance concerning a construction product for which a european technical assessment has been issued:**
Not applicable
- 9 Declared performance:**

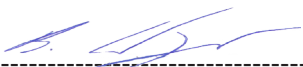
Essential characteristics	Performance	Harmonized technical Specification
Reaction to fire (<18mm in thickness, 3 or 4mm top layer)	Dfl-S1	En 14342:2005+A1
Reaction to fire (20/21mm in thickness, 6mm top layer)	Cfl-S1	
Emission of formaldehyde	Class E1	
Content of pentachlorophenol	<5 ppm	
Breaking strength	NPD	
Thermal conductivity	0.08 - 0.123 W/mk	
Biological durability	Class 1	

- 10** The performance of the product identified in points 1 and 7 is in conformity with the declared performance in point 9. This declaration of performance is issued under the sole responsibility of the importer identified in point 4 Signed for and on behalf of the importer by:

Beannad Hogan (Director)

(name and function)

24/6/13 Dunleer Co. Louth.





whiteriver group

www.wrg.ie

Dunleer, Co. Louth, Ireland.
Tel: (+353) 041 686 1000 Fax: (+353) 041 686 2909
Email: sales@wrg.ie