

# PRODUCT SPECIFICATION SHEET

**Whiteriver**

wood for living

## 12MM ROBUSTO 4V 33 / AC5

PRODUCT RANGE	INFORMATION
Floor Type	Laminate Floor
Features & Finish	1-Strip
Board Size	1375 X 188 X 12mm
Box Quantity	5 Boards per pack
Pack Size	1.293m <sup>2</sup>
Packs per pallet	56 Packs per pallet
Use Class	33 / AC5
Origin	Made in Germany
Bevel	4V
Bathroom	No
Conservatory	Yes
Under Floor Heating	Yes
Warranty	30 Year residential / 5 Year commercial according to terms of our warranty
Installation	5G click system
DOP	WD_LF_001 Available on request with our office or can be downloaded on <a href="http://www.wrg.ie">www.wrg.ie</a> .
EUTR	Responsibly sourced under EUTR regulations

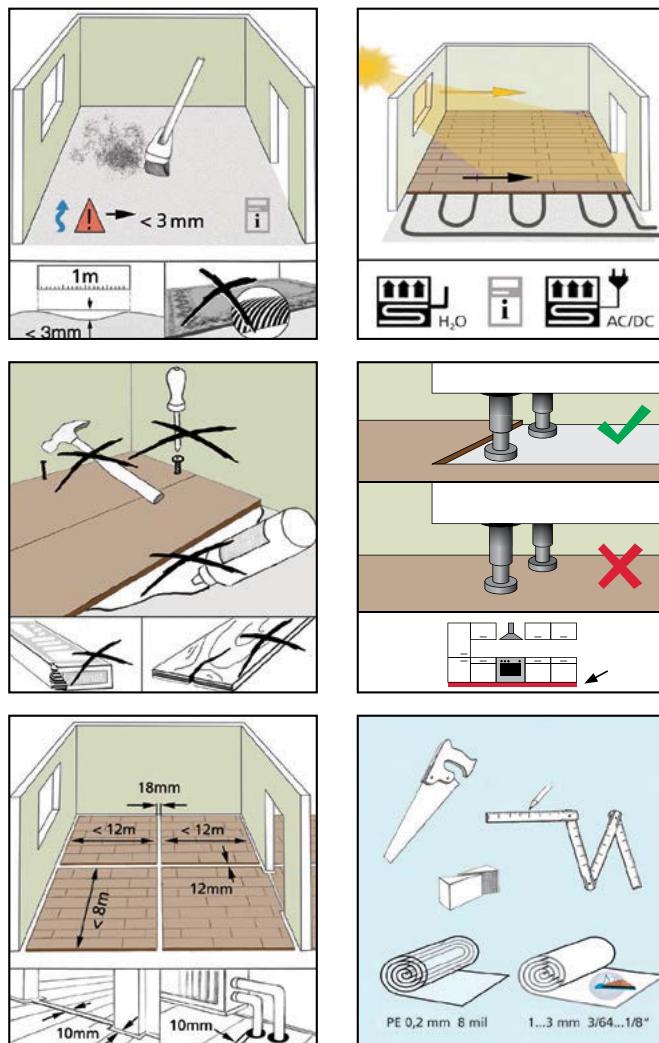
TEST	CHARACTERISTICS	TEST METHOD
Formaldehyde emission	< 0.05 ppm	EN 717-1
Surface stain resistance	Grade 5, no visible changes to surface	EN 438-2, 15
Lightfastness	≥ Level 6 Blue Wool Scale Level 4 Grey Scale	EN ISO 105-B02 EN 20 105-A02
Resistance to cigarette embers	Grade 4, no visible changes to surface	EN 438-2, 18
Fire resistance	Ignites with difficulty, at least Cfl-s1	EN 13501-1
Height difference between connected elements	Average: ≤ 0.10 mm Max: ≤ 0.15 mm	EN 13329
Edge straightness (bend)	≤ 0.3 mm/m	EN 13329
Openings between connected elements	Average: ≤ 0.15 mm max: ≤ 0.20 mm	EN 13329
Static indentation	< 0.01 mm - no visible changes, Impression in test with straight steel cylinder of 11,3 mm diameter 0.09 K/W	EN 433

Thermal resistance

This technical data sheet was developed by Whiteriver Group, Cluide, Dunleer, Co Louth, Ireland, A92 V8YN. At the time of issuing this datasheet, all information is correctly stated. The company reserves the right to update or amend the specifications of this product at any time without prior notice to third parties.

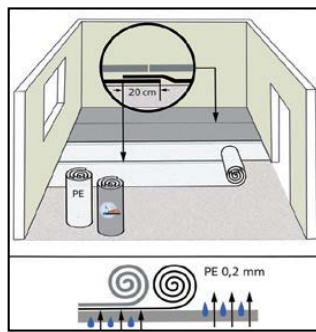


## TOP TIPS BEFORE YOU START

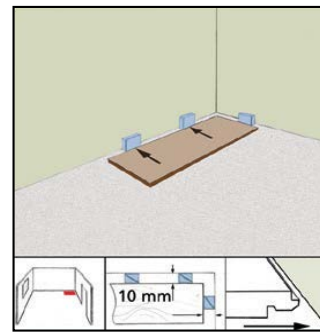


- Consult instructions for full details on site conditions and moisture content of subfloor. The moisture content of cement screeds should be 2.0% CM (3% on red scale Tramex Concrete Encounter). For anhydrite/pump screeds with underfloor heating, the moisture content should be 0.3% CM (1.6% on red scale Tramex Concrete Encounter).
- Install 0.2mm/500 gauge polythene on all concrete surfaces to provide a vapor barrier. All polythene joints should be overlapped and taped.
- Check the sub-floor is level and even before installation.
- Use a good quality flooring underlay for your floor.
- Leave boxes unopened in room for 48 hours prior to installation.
- Select board direction e.g. towards light or longest room dimension. This floor requires no glue and has a simple click system.
- Install as a floating floor with room for expansion around perimeter. Follow installation instructions for first and second row.
- Where the same floor is being installed through adjoining rooms it is important to leave a 10mm expansion gap under each door.
- Stagger joints by 30 - 40 cm thereafter.
- Select finishing profiles, skirting, pipe covers, doorway slips.
- Use felt pads and protective castors underneath furniture legs. Please use suitable cleaning products for aftercare.
- Installation instructions may vary. See pack for details.

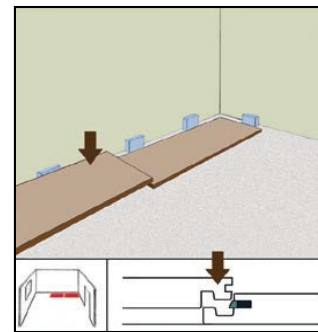
## 5G LAMINATE INSTALLATION GUIDE



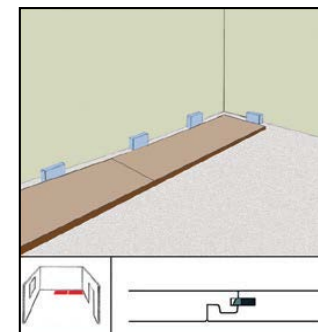
1



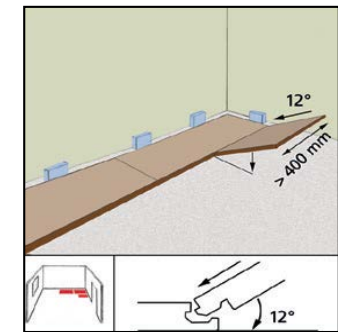
2



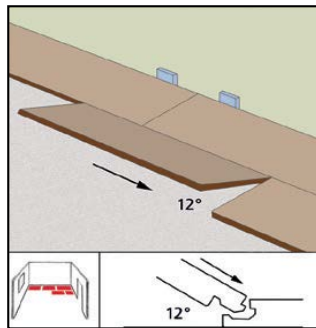
3



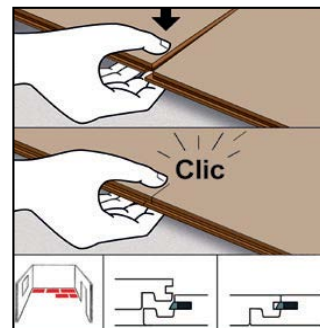
4



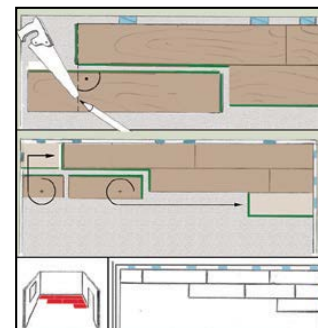
5



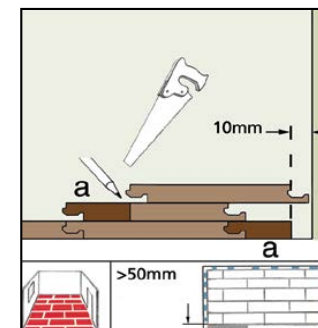
6



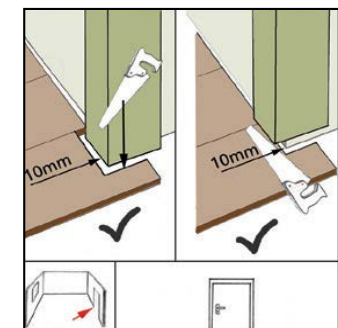
7



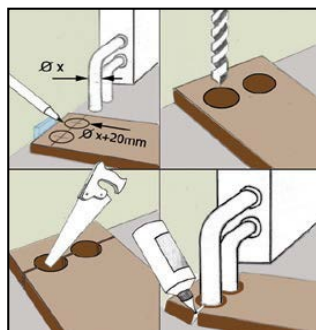
8



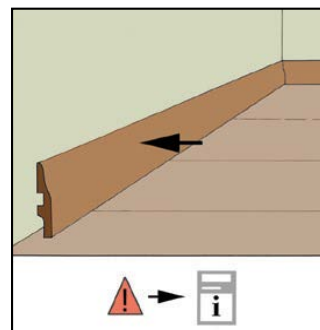
9



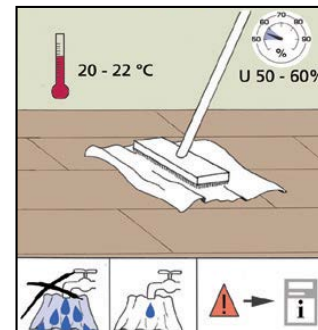
10



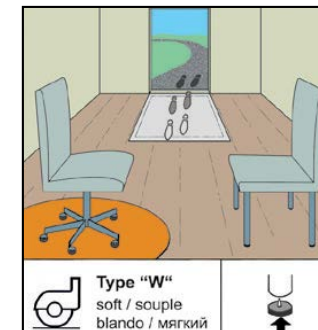
11



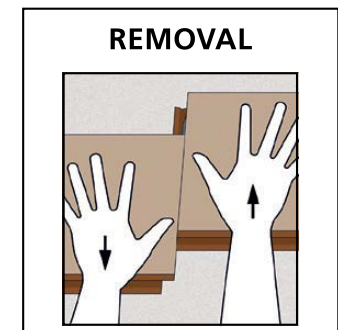
12



13



14



15

# CARING FOR YOUR LAMINATE FLOOR



## **Aqua Shield**

**1000ml**

For refreshing of prefinished floors, increases durability and protects against penetrating moisture from above.  
1000ml (approx 35m<sup>2</sup>)



## **Intensive Active Cleaner**

**500ml**

For regular cleaning of Laminate floors, Synthetic/PVC, Rubber and Tiles.  
(approx 40 applications)

### **FIRST CARE**

As a low maintenance product, Laminate flooring does not require any special initial treatment.

### **REGULAR CARE**

#### **Dry cleaning:**

It is usually sufficient to clean your Laminate Floor dry using a dust mop, soft broom or vacuum cleaner.

#### **Damp cleaning:**

We recommend that the floors be mopped regularly with clean & green® active depending on how dirty the floor is and wear and tear.

Add ½ dosage cap of clean & green® active to 5 litres (1.3 gal.) of water. Then wipe the surface with a well-wrung, slightly damp cloth. Do not clean the floor surface too damp, always avoid letting water stand on the surface. By polishing the floor with a cloth afterwards you can optimize the shine of your floor's surface. Steam cleaning machines are not suitable for use on laminate floors.

### **INTENSIVE CARE**

#### **Refreshing:**

To optically refresh the floor and improve durability, we recommend that you use Clean & Green AquaShield. Start by thoroughly cleaning the floor (dust-free). We recommend Clean & Green Active for this job. Clean & Green AquaShield is applied on diluted with a rectangular/square cotton cover mop. Evenly apply the AquaShield in overlapping lines. Wait about two hours before subjecting the floor to traffic and load. The application of Clean & Green AquaShield can lead to changes in the gloss level.

### **BASIC PROTECTION**

In maintaining the appearance of your Laminate Floor it is always beneficial to use protective felt pads under chairs and table legs and doormats in entrances (to protect your laminate floor against moisture, dirt and sand). A further recommendation is to use the polycarbonate mats.

### **ENTRANCE BARRIER MATTING**

We recommend that good quality entrance barrier mats are used at all external entrances to the laminate flooring to collect grit and moisture from the underside of footwear. We strongly recommend that at least 2 - 3 foot falls are allowed for. Vacuum and clean the mat regularly. If you must move heavy pieces of furniture (e.g. refrigerator, sofa etc.), never slide them directly over the flooring. Instead, place a piece of carpet face down between the legs and the flooring and pull on the carpet to move the furniture.

### **SPILLAGES**

Laminate floors have a level of water resistance; however damage can occur if spillages of liquid onto the surface are not wiped up immediately.

# DECLARATION OF PERFORMANCE

DOP WD\_LF\_001

1. Unique identification code of the product-type:

Laminate Flooring produced for indoor

2. Type, batch or serial number or any other element allowing identification of the construction product as required pursuant to Article 11(4):

Laminate Flooring produced for indoor

3. Intended use or uses of the construction product, in accordance with the applicable harmonised technical specification, as foreseen by the manufacturer:

For use as floor covering in buildings (see EN 14041) according to the manufacturer's specifications.

4. Name, registered trade name or registered trade mark and contact address of the manufacturer as required pursuant to Article 11(5):

Whiteriver (wrg) Ltd,  
Cluide.,  
Dunleer,  
Co. Louth,  
Ireland.

5. Where applicable, name and contact address of the authorised representative whose mandate covers the tasks specified in Article 12(2):

6. System or systems of assessment and verification of constancy of performance of the construction product as set out in Annex V:

System 3

7. In case of the declaration of performance concerning a construction product covered by a harmonised standard:

Name of the notified test laboratory, that has issued the certificate of conformity of the factory production control, inspection reports and calculation reports (if relevant).

not applicable

Fraunhofer-Institut Für Holzforschung, WKI NB 0765

Notified Body

certificate of constancy of performance

8. In case of the declaration of performance concerning a construction product for which a European Technical Assessment has been issued:

not applicable

9. Declared performance

Essential characteristics	Performance	Harmonised technical specification
Reaction to fire	C <sub>fl</sub> -s1	EN 14041: 2004/AC:2006
Content of Pentachlorophenol	NPD	EN 14041: 2004/AC:2006
Formaldehyd Emissions	E1	EN 14041: 2004/AC:2006
Slip resistance	DS	EN 14041: 2004/AC:2006
Electrical behavior (dissipative)	NPD	EN 14041: 2004/AC:2006
Electrical behavior (conductive)	NPD	EN 14041: 2004/AC:2006
Electrical behavior (antistatic)	NPD	EN 14041: 2004/AC:2006
Thermal conductivity [W/mK]	NPD	EN 14041: 2004/AC:2006
Water-tightness	NPD	EN 14041: 2004/AC:2006

NPD: No performance determined

10. The performance of the product identified in points 1 and 2 is in conformity with the declared performance in point 9.

This declaration of performance is issued under the sole responsibility of the manufacturer identified in point 4

Signed for and on behalf of the manufacturer by:

BERNARD WOGAN (Director)

(name and function)

24/6/13 Dunleer Co. Louth

(place and date of issue)



(signature)