

TILE|MERCHANT

---

# Composite Decking Range 2021



ALPHADECK

[www.tilemerchant.ie](http://www.tilemerchant.ie)



# Contents

— What is Composite Decking? .....	3
— We Care About The Environment .....	4
— Quick Alpha Deck Composite Decking Benefits .....	5
— Alpha Deck Installation .....	6
— Alpha Deck — Decking .....	10
— Alpha Deck — Fascia .....	11
— Antique Grey .....	12
— Teak .....	13
— Oak .....	14
— Walnut .....	15
— Cool Grey .....	16
— Charcoal Grey .....	17
— Alpha Deck — Accessories .....	18
— FAQs .....	19



---

# What is Composite Decking?

Alpha Deck composite decking is a premium product created for the Irish market and climate. The ultra-modern manufacturing process and technology behind these composite decking boards have created an outdoor decking option that is both anti-slip and super long-lasting.

Alpha Deck is water resistant and exceptionally anti-slip, so you can be assured that when installing it in the garden or balcony of your home, that it is safe for your family throughout periods of wet weather.

Wet weather often causes wood decking to become very hazardous under foot - our composite decking is the perfect antidote to this. Also, unlike its wood counterpart, composite decking will not rot, splinter, fade or warp.

We have made installation of composite decking easy with a detailed installation guide with graphics showing every single step. To further help the seamless installation of your decking we sell installation kits with all you need to secure your decking in place.

Composite decking prices may seem high initially but this product will not fade in the sun and will last for up to 25 years if maintained and installed correctly.

Composite decking is more hard-wearing and a safer option than wood as it does not splinter or warp as the seasons change; it is also more slip-resistant. You can rest assured that, by choosing Alpha Deck, you will end up with a high-quality deck that's far superior to a traditional timber construction.

---

## How is composite decking created? Get ready for some technical information:

Alpha Deck is created from light weight, durable thermoplastic, named Polyethylene and recycled wood fibres. Both of these components have been sourced from recycled wood and plastic, creating a product that is environmentally friendly. UV coating and stabiliser is also added to the composite so it won't fade in the sun.

### Alpha Deck's superior technology produces "capped" decking.

#### What is capped decking?

Capped decking has many of the same properties as any other good-quality composite decking material: the boards are hard-wearing, long-lasting, and extremely resistant to rotting, splintering, and warping. However, capped composite decking has one big advantage over non-capped materials. Capped boards are protected by a durable, moisture-resistant hi-tec polymer sleeve that keeps the body of the board safe from stains and spills; anything you spill on capped boards can be wiped clean in an instant, so you can enjoy eating and drinking on your new deck!





---

# We Care About The Environment

We truly care about the environment which is why we have created our composite decking in the most environmentally friendly way possible.

Our product has been entirely created from recycled thermoplastic and recycled wood fibres.

When creating a composite decking that lasts up to 25 years we needed to avail of the latest technology and use the most sophisticated manufacturing process. During the developmental stage of creating Alpha Deck our guiding principle was to create a product with the least environmental impact. We used the latest technology and manufacturing processes to create a product entirely from recycled materials.

---

**We are thrilled that we could make this sustainable, long-lasting decking that lasts for decades.**





---

# Alpha Deck Composite Decking Benefits

## **Anti-Slip**

Our decking has been created and manufactured for the Irish Climate. Which is why one of our key points of focus was to create a decking option that is safe during wet periods that does not become hazardously slippery when wet like wood decking.

So when the rain falls, you and your family can be confident under foot.

## **Anti-Rot**

Our climate has extended periods of wet/damp conditions. These weather conditions will not adversely affect Alpha Deck.

## **Resistant to corrosion, fungi and mould**

Resistant to corrosion, fungi and mould Alpha Deck is resistant to naturally occurring corrosion, fungi and mould.

## **Fade-free**

During the manufacturing process UV coating and stabiliser is also added to the composite to keep the decking free from fading.

## **Warp-free**

Alpha Deck will not warp or buckle due to changes in the season or exposure to harsh weather conditions.

## **Low-maintenance (no need to seal or paint)**

Alpha Deck does not need to be maintained. No sealing. No varnishing. No staining.

## **Easy to clean**

Of course, your deck will need to be cleaned from dust and natural elements. To keep it looking as it should, regularly clean with water and a brush.

If there is a red wine or BBQ related spillage, clean the area initially with some warm water, and then lightly scrub with warm soapy water



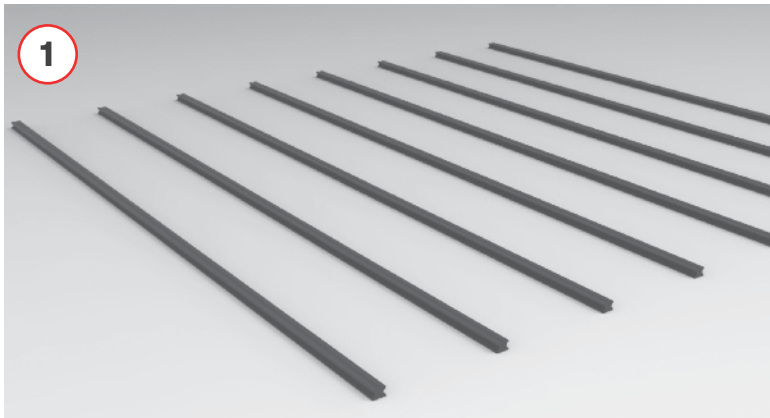
# Alpha Deck

## Installation

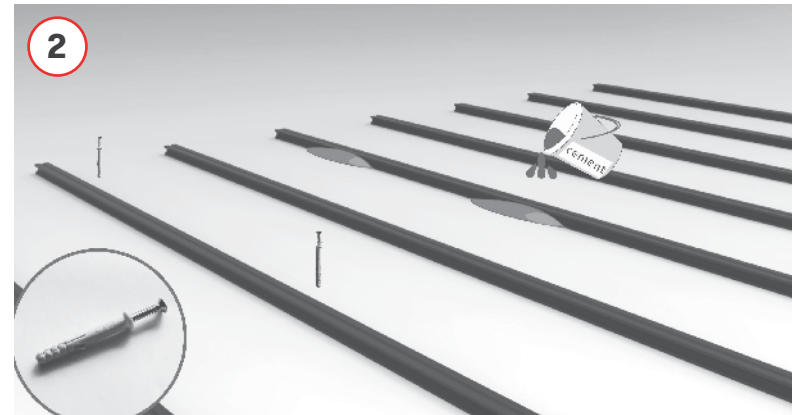
As with other building work it is important to work safely and to take suitable safety precautions including the wearing of protective clothes, gloves, safety goggles and dust mask.

### Before Beginning the Work

- Having taken delivery of your boards, we recommend you allow them a day to adjust to your local temperature and conditions before starting work. We do not recommend installing your deck in cold weather. Your decking boards can be worked with normal woodworking tools. We recommend using a wood saw with a fine-tooth blade to cut boards to size. When cutting, care should be taken to ensure that boards are properly supported.

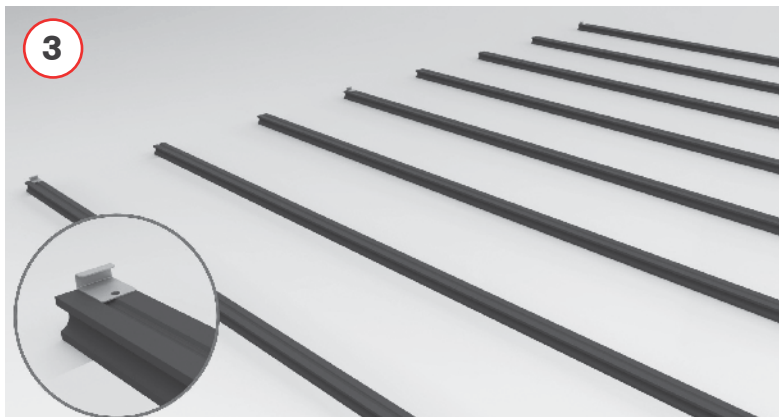


- Make sure the ground is even, and then lay the joists on the ground.

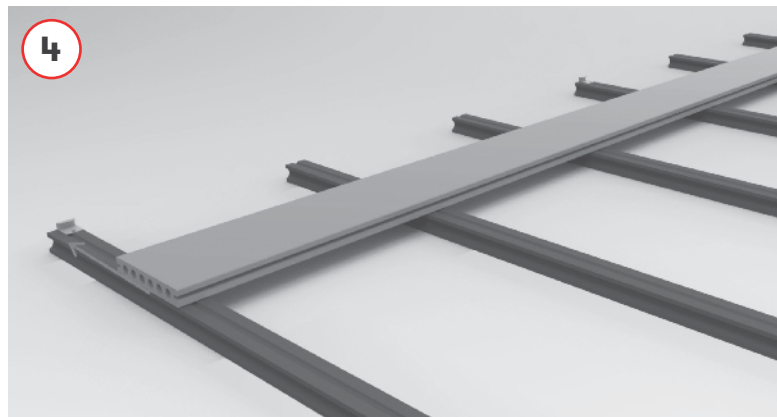


- Fix the joists tight onto the ground by using screws or cement.

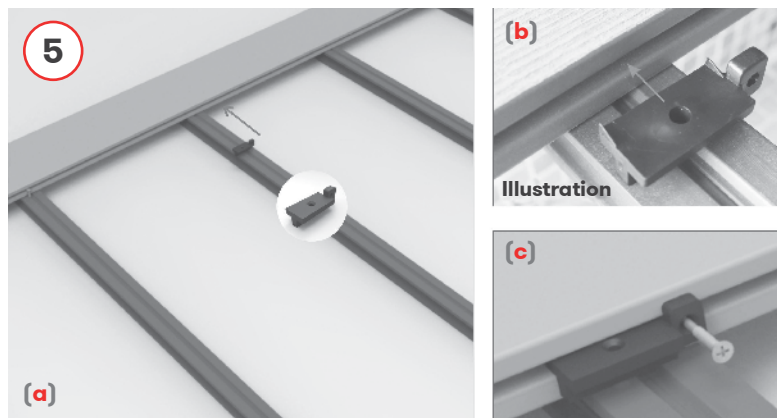




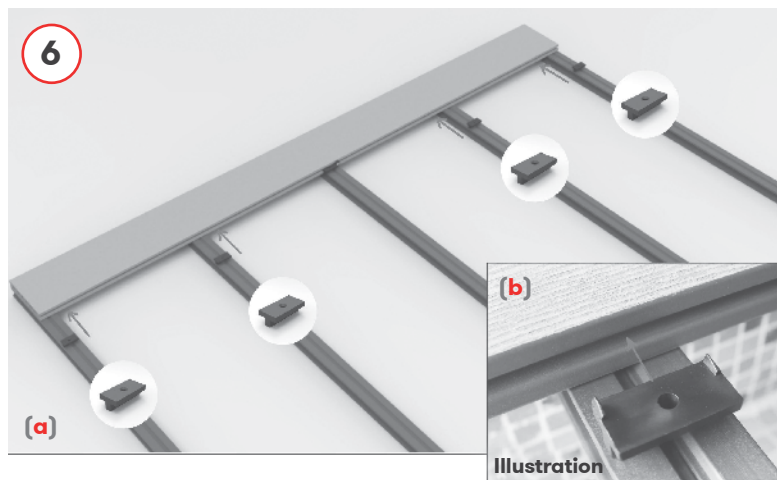
- When installing the first decking board, fix the starter clips onto the joists first.



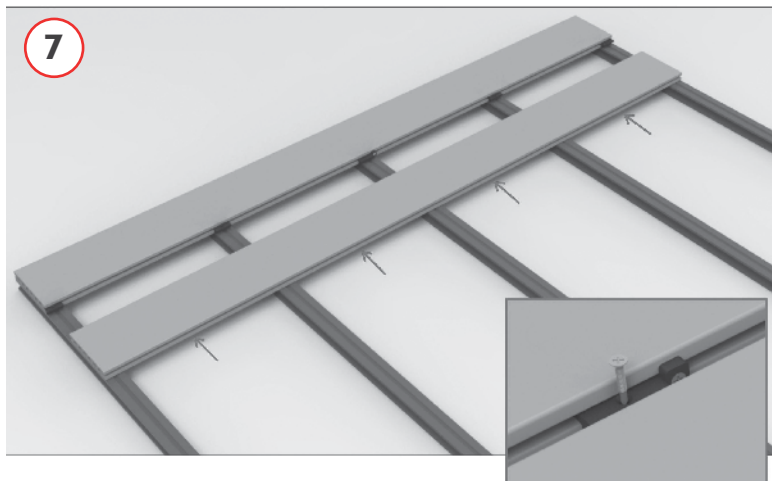
- Push the deck board tight to the side clips.



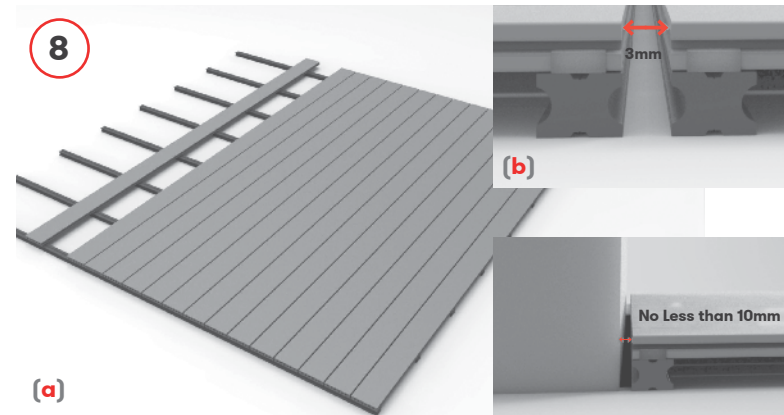
- **(a)** Put the special clip with a side hole into the middle of the decking side groove.
- (b)** Make sure the toothed side is into the decking groove.
- (c)** Screw through the side hole and fix the clip to the decking board.



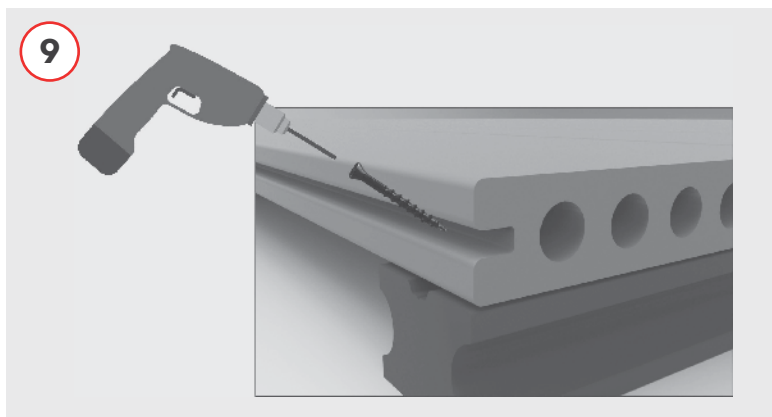
- **(a)** Use the normal clips for the rest of the installation as illustrated.
- (b)** Make sure the toothed side is in the groove.



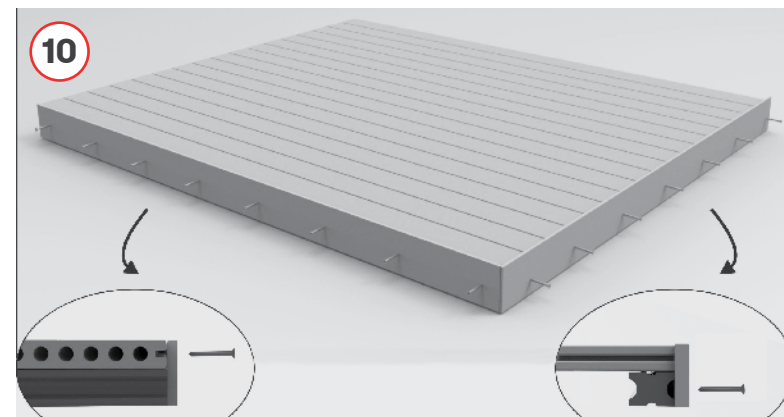
- **(a)** Push the second row of boards into the previous installed row of boards making sure that the deck board grooves are in tight on the clips.
- **(b)** Affix the decking by screwing into position.



- **(a)** Repeat the steps above for the decking installation.
- **(b)** Make sure the gap between cross sections of decking boards is no less than 3mm.
- **(c)** Make sure to leave 10mm gaps to the walls for the expansion and contraction.



- Predrill a hole like the pic shown above and then screw the decking boards to the joist.



- Fix the fascias.
- Leave a 40mm gap for drainage.







# Alpha Deck — Decking

## Pricing

Prices correct as of Feb 2021 but due to fluctuating global shipping costs prices are liable to change. Please check tilemerchant.ie for the latest up to date pricing.



### Antique Grey

3600×138×22mm  
— CD01ANTGREY  
— €69.99 m<sup>2</sup>



### Teak

3600×138×22mm  
— CD02TEAK  
— €69.99 m<sup>2</sup>



### Oak

3600×138×22mm  
— CD03OAK  
— €69.99 m<sup>2</sup>



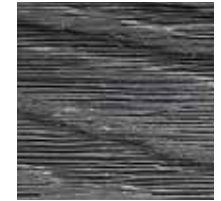
### Walnut

3600×138×22mm  
— CD04WALNUT  
— €69.99 m<sup>2</sup>



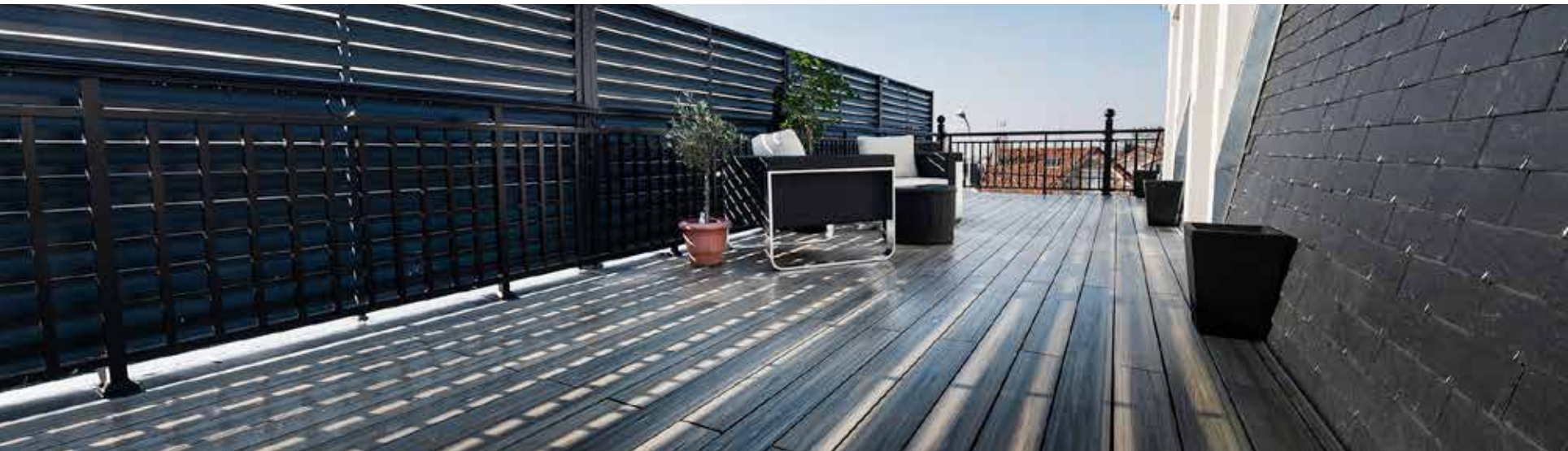
### Cool Grey

3600×138×22mm  
— CD05COOLGREY  
— €69.99 m<sup>2</sup>



### Charcoal Grey

3600×138×22mm  
— CD06CHARCOALGREY  
— €69.99 m<sup>2</sup>



# Alpha Deck — Fascia

## Did you know?

All of our fascias have a ridged and wood-effect side, the choice of which to use is an aesthetic one.



### Antique Grey

3600×71×11mm

— CDFC05ANTGREY

— €17.99 per piece



### Teak

3600×71×11mm

— CDFC06TEAK

— €17.99 per piece



### Oak

3600×71×11mm

— CDFC07OAK

— €17.99 per piece



### Walnut

3600×71×11mm

— CDFC08WALNUT

— €17.99 per piece

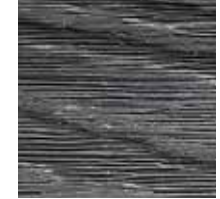


### Cool Grey

3600×71×11mm

— CDFC09COOLGREY

— €17.99 per piece



### Charcoal Grey

3600×71×11mm

— CDFC10CHARCOALGREY

— €17.99 per piece

## What is a fascia?

A composite decking fascia is a flat piece of composite that rounds off your decking neatly.

## Benefits of composite decking

- Long Lasting - Up to 25 years
- Water Resistant
- Anti-Slip - Exceptional Anti-Slip Properties
- Easy To Clean
- Low Maintenance
- Environmentally friendly and 100% recyclable
- Contains no toxic chemicals or preservatives
- No need for sealant
- Hyper realistic wood feel and look-effect
- No splinters or cracks



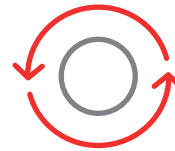




---

# Antique Grey

Our Antique Grey is a deep toned grey decking that is soothing on the eye. Never too dark in the winter months and never too bright in the summer months, Antique Grey is a choice that works year round.



**100% recyclable**



**Zero toxic chemicals or preservatives**



# Teak

Teak is a star within our range due its beautiful warm brown colour. This super realistic teak tone is a wonderful addition to any traditional style garden as it would work seamlessly with the trad-aesthetics.



**No need for sealant**



**Hyper realistic wood-effect**







---

# Oak

Oak is a classic. The welcoming mild tone is a tonic to harsh tones and harsh weather. Soften your balcony or garden with the soothing oak colour.



**Water Resistant**



**Anti-Slip**



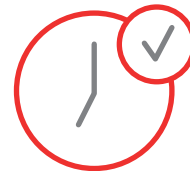


# Walnut

Our wonderfully deep and rich Walnut composite decking is for the bolder among us. Walnut is one of the darkest tones within our composite range and it is stunning when used correctly.



**No splinters or cracks**



**Long Lasting - Up to 25 years**



---

# Cool Grey

Bright, light and cool year round, our Cool Grey composite decking brings something to every season. Cool Grey has a radiant tone, bring that radiance to your garden.



**Water Resistant**



**Anti-Slip**



---

# Charcoal Grey

Create a striking decking in your home with Charcoal Grey. This deep toned decking option looks fantastic installed. A fine way to add some lasting colour to your outdoor space.



**Water Resistant**



**Anti-Slip**





# Alpha Deck Accessories

## CDCLIPS2



AlphaDeck  
Composite Decking

— 2m2 Installation  
Pack

— €17.99



### Composite Accessory 2m2 Installation Kit

-  Starter Clip x 2
-  Special Clip x 10
-  Normal Clip x 40
-  52 Screws

## CDCLIPS10

AlphaDeck  
Composite Decking

— 10m2 Installation  
Pack

— €89.99



### Composite Accessory 10m2 Installation Kit

-  Starter Clip x 10
-  Special Clip x 50
-  Normal Clip x 200
-  260 Screws





---

# FAQs

## **Is Alpha Deck maintenance free?**

Alpha Deck requires no oiling, sanding or painting.

Naturally, normal sweeping and cleaning of your decking is required. Alpha Deck is highly stain resistant but to keep your decking looking its best regular cleaning must take place. Thankfully Alpha Deck boards are very easy to clean.

## **Does Alpha Deck fade from prolonged exposure to sun?**

Alpha Deck has been created using the latest Ultra-Violet (UV) resistance technology. Which is why your decking should last up to 25 years without significant fading.

All outdoor materials weather and age, but Alpha Deck has been created with resilience in mind.

## **Why does composite decking cost more than some wood decking?**

Alpha Deck is a premium product that is built to last for 25 years minimum. To create a product with this longevity, we used the latest technology and the most sophisticated manufacturing processes.

Over time Alpha Deck composite decking will out last wood decking and will cost nothing to maintain unlike wood that will require annual sealing and painting. So you can enjoy your decking instead of working on your decking!

## **How do I wash my decking?**

Warm soapy water is perfect but for best results use a power washer.

## **Does Alpha Deck have a warranty?**

Yes, Alpha Deck comes with a 25-year manufacturing warranty in residential settings.



# TILE|MERCHANT

---

## **Ballymount**

Tile Merchant, Dockrell's Complex,  
Ballymount Road Upper, Dublin 24

**D24E8PX**

---

## **Coolock**

Tile Merchant, 17 Greencastle Parade  
Malahide Road Industrial Park, Dublin 17

**D17XT88**

---

## **Opening hours:**

Mon-Fri → 8:30-5:00

Saturday → 9:00-5:00

Sun & Bank Holiday → 1:00-5:00

---

**[www.tilemerchant.ie](http://www.tilemerchant.ie)**

**[info@tilemerchant.ie](mailto:info@tilemerchant.ie)**

**01 686 9484**