

# PRODUCT SPECIFICATION SHEET

Whiteriver

wood for living

## 12MM DECO PLANK 4V 33 / AC5

| PRODUCT RANGE               | INFORMATION   |
|-----------------------------|---|
| Floor Type                  | Laminate Floor  |
| Board Size                  | 198 x 12 x 1218mm   |
| Box Quantity                | 6 Boards per pack   |
| Pack Size                   | 1.447m <sup>2</sup>   |
| Packs per pallet            | 65 Packs per pallet   |
| Use Class                   | 33 / AC5  |
| Bevel                       | 4V  |
| Under Floor Heating Capable | Yes   |
| Warranty                    | 30 Year residential / 5 year commercial according to terms of our warranty  |
| Installation                | 5G Click System   |
| DOP                         | 1020-CPR-010-044571 Available on request with our office or can be downloaded on <a href="http://www.wrg.ie">www.wrg.ie</a> . |

| TEST   | CHARACTERISTICS   | TEST METHOD      |
|--|---|------------------|
| Formaldehyde emission                        | Class E1 (<8mg/100g)<br>Class E1 (<0.124mg/m <sup>3</sup> ) | EN 120<br>EN 717 |
| Surface stain resistance                     | Grade 5, no visible changes to surface                      | EN 438-2, 15     |
| Lightfastness                                | ≥ Level 6 Blue Wool Scale Level 4 Grey Scale                | EN 20105-B02     |
| Abrasion Resistance                          | AC5 (≤6000 Umdr)  | EN 13329         |
| Fire resistance                              | Bfl-s1  | EN 14041         |
| Opening between elements                     | Average: ≤ 0.15mm - Max: ≤ 0.20mm                           | EN 13329         |
| Height difference between connected elements | Average: ≤ 0.10 mm Max: ≤ 0.15mm                            | EN 13329         |
| Edge straightness (bend)                     | ≤ 0.3 mm/m  | EN 13329         |
| Thickness / Edge Swelling                    | ≤ 16%   | EN 13329         |
| Surface Soundness                            | ≤ 1.00n/mm <sup>2</sup>                                     | EN 322           |
| Slip Resistance                              | Technical Class DS ≥ 0.3                                    | EN 13893         |
| Impact Resistance                            | IC3   | EN 13329         |

This technical data sheet was developed by Whiteriver Group, Cluide, Dunleer, Co Louth, Ireland, A92 V8YN. At the time of issuing this datasheet, all information is correctly stated. The company reserves the right to update or amend the specifications of this product at any time without prior notice to third parties.

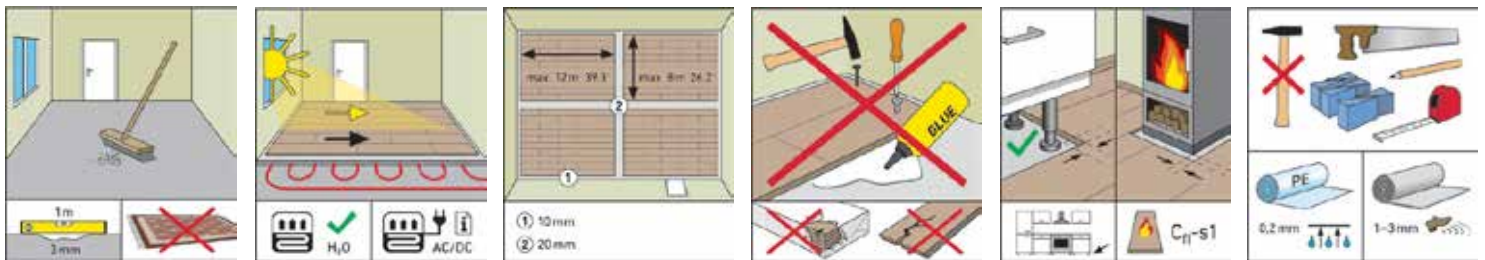


# INSTALLATION INSTRUCTIONS FOR LAMINATE

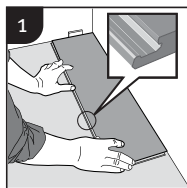
## Important information



- The flooring must be acclimated a minimum of 24 to 48 hours prior to installation in the room where the installation will take place.
- In larger rooms the flooring must be installed in smaller sections with expansion joints.
- The distance to walls and other permanent pieces of construction elements (such as pillars and kitchen islands) should be approximately 1,5 mm per meter of the length and width of the floor (width 10 m = 15 mm expansion gap).
- Never install very heavy pieces of furniture such as kitchen islands/cabinets on top of the flooring.
- The indoor climate should have a temperature between 15-23 °C and relative air humidity between 30-60%.
- Always follow the floor manufacturers requirements and specifications regarding subfloor preparation.

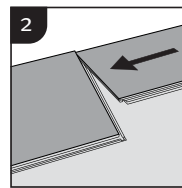


## General installation instructions



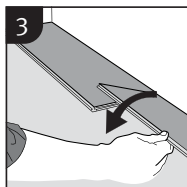
### First row, first plank

Start in a left corner with the tongue side against the wall and work to the right. Press down a wedge to the left to create a joint of at least 8-10 mm.

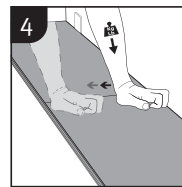


### First row, second plank

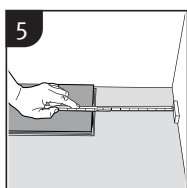
Place the plank gently and tight to the short end of the first one.



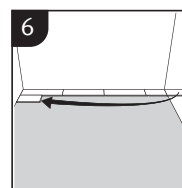
Fold the plank down in a single movement. Make sure the plank are tight against each other. **Note!** You should here a CLICK sound.



Afterwards press slightly along the short end just installed.

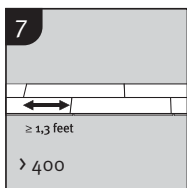


At the end of the first row, put a wedge to the wall and measure the length of the last plank to fit.

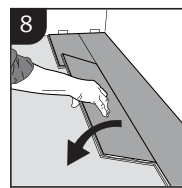


### Second row, first plank.

Start with the rest of the cut plank from the first row.

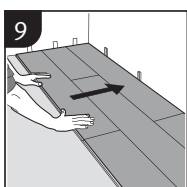


Staggered joint distance i.e. minimum distance between short ends of plank in parallel rows shall not be less than the given length.



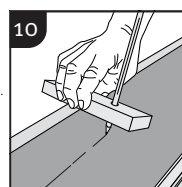
### Second row, second plank.

Place the plank gently and tight to the short end of the previous plank and fold it down in a single action movement. Make sure the planks are tight against each other both during and after this step.

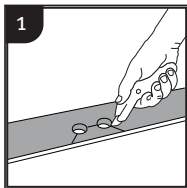


### After 2-3 rows.

Adjust the distance to the front wall by placing wedges. The joint should be at least 8-10 mm.

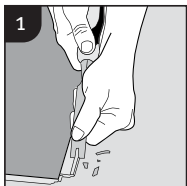
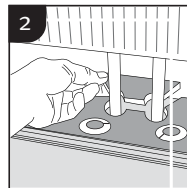


The first and last row may need to be adjusted at an uneven wall. Copy the wall line to the first or last plank row with the shown tool, disassemble planks, adjust and reinstall.



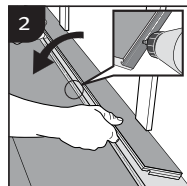
### Installation around radiator/heating pipes

Drill holes two times larger than the diameter of the pipes. Remove a piece of the panel with a utility knife. Put the panel on one side of the pipes and the removed piece on the other side.

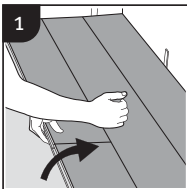


### When angling is not possible

Remove the vertical locking element/hook of the plank with a chisel, put applicable glue on the locking element and push the plank horizontally together. Place wedges between last glued plank and the wall.



## Dismantling Panels



Separate the whole row by carefully lifting up and release the whole row. Fold up the row and release the whole long side.



Disassemble the panels by sliding the short ends horizontally.  
**Never fold up a panel, as this damages the profile.**

# CARE AND MAINTENANCE LAMINATE FLOORING

Whiteriver

wood for living

## LAMINATE FLOORING

Laminate floors are low maintenance products. Laminate flooring does not require any special initial treatment. To prolong the lifespan of the floor it is important to use the recommended maintenance products below as it provides ongoing protection to the floor surface.

Laminate floors have a level of water resistance, however damage can occur if spillages of liquid onto the surface are not wiped up immediately. If there are other building works taking place after installation the floor should be covered to protect the finish. Please see the reverse of each product for full usage instructions. There are also detailed video instructions available from the QR code on each product.

### Everyday Cleaning



#### Saicos Ecoline Wash Care

Available in 1l / 5l

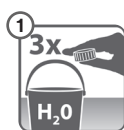
Application with Saicos Ecoline Maintenance Set

**Wash Care Concentrate removes normal dirt of all wipeable surfaces gently and thoroughly.**

#### Fields of application:

For all wooden and cork floors with lacquered surface as well as PVC, laminate and linoleum floors.

#### Recommended application:



- Dilute the concentrate with water (3 caps with approx. 5 l of water).



- We recommend the application with SAICOS Ecoline Maintenance Set.



- Make sure that the wiping cloth is wrung out carefully to ensure damp cleaning.
- Wipe dry if required.



- Please consider our current technical data sheets.

### Periodic Cleaning



#### Saicos Ecoline Magic Cleaner

Available in 1l Concentrated / 1l Ready to use spray

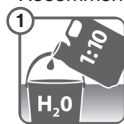
Application with Saicos Ecoline Maintenance Set

**Ecoline Magic Cleaner Concentrate cleans quickly and intensively all heavily soiled and worn surfaces.**

#### Fields of application:

Intensive cleaning of all lacquered surfaces as well as laminate, PVC and linoleum. Easy removal of nicotine, grease and dirt films in bathroom and kitchen.

#### Recommended application:



- Dilute the concentrate 1:10 with water (e.g. 0.5 l with 5 l of water).
- Put the dilution evenly onto the surface with Ecoline Maintenance Set.



- Do not pour onto the surface and do not leave any puddles.
- Allow to absorb for 5 - 20 minutes.
- Re-treat dried areas during this time.



- Remove any loosened dirt thoroughly with a damp Ecoline Maintenance-Set.
- Wipe 2 - 3 times with fresh water and a damp cloth. Wipe dry.



- Repeat the application if necessary.
- Please consider our current technical data sheets.

### Periodic Regeneration



#### Saicos Ecoline Refresher

Available in 1l

Application with Saicos Ecoline Maintenance Set

**Ecoline Refresher Concentrate maintains and regenerates lacquered surfaces.**

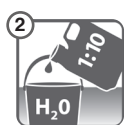
#### Fields of application:

Especially for lacquered wood flooring and bamboo as well as PVC- & linoleum floors. Also well suited for furniture and other interior wood (lacquered surfaces).

#### Recommended application:



- Clean the surfaces to be treated with Ecoline Wash Care.



- Dilute Ecoline Refresher Concentrate 1:10 with water (e.g. 0.5 l with 5 l of water).



- Spread evenly onto the surface with Ecoline Maintenance Set.



- Allow to dry.
- Please consider our current technical data sheets.

# CARE AND MAINTENANCE

## LAMINATE FLOORING

### Room Conditions

Timber likes pleasant room conditions similar to humans; a room temperature of 20°C and humidity of about 50%. A humidity controller may be required. All rooms, which have timber flooring, should ideally be maintained at the above.

#### RECOMMENDED FREQUENCY OF FLOOR MAINTENANCE

|  | Ecoline Wash Care | Ecoline Magic Cleaner | Ecoline Refresher                       |
|--|-------------------|-----------------------|---|
| Intensity of use   | Everyday Cleaning | Periodic Cleaning     | Periodic Regeneration                   |
| Floors in rooms which are not intensively used, e.g. living rooms, bedrooms                  | Every 5-7 days    | Every 6-12 months     | As required following visual inspection |
| Floors in areas which are used with average intensity, e.g. stairs, corridors, office spaces | Every 3-5 days    | Every 3-6 months      | As required following visual inspection |
| Floors in places which are intensively used, e.g. restaurants, shops, schools                | Every 1-3 days    | 1-2 times per month   | As required following visual inspection |

**IMPORTANT:** The floor should be cared for using only agents intended for this purpose.



### Protecting your floor

To preserve quality and beauty of your floor the following guidelines should be followed.

- Use protective pads and castor cups under chairs and furniture legs. Use good quality polycarbonate mats under wheeled office chairs.
- We recommend that good quality entrance barrier mats are used at all external entrances to the flooring to collect grit and moisture from the underside of footwear.
- Never use a rubber mat, with Styrofoam or plastic backing.
- For moving heavy furniture place a piece of carpet face down between the legs and the flooring and pull on the carpet to move the furniture.
- We would advise that during installation / other building works that the floor is covered with a heavy duty breathable floor protection roll / sheets to protect the floor.
- Do not apply adhesive / decorators tape directly to the floor.

**In the event of a proven manufacturing defect, the companies or sellers total liability shall under no circumstances exceed the value of the defective product. The company or seller shall not in any way be responsible for any additional consequential costs or losses. If you are unclear regarding any of the above instructions, contact your local supplier.**



## Laminate Flooring Warranty

12mm Milano Herringbone

12mm Deco Plank

| Product  | Domestic Premises | Commercial Premises |
|--|-------------------|---------------------|
| Whiteriver Laminate Flooring 12mm Milano Herringbone | 30 Years          | 5 Years             |
| Whiteriver Laminate Flooring 12mm Deco Plank         | 30 Years          | 5 Years             |

### Relationship to contractual and statutory defect claims

Whiteriver Group (Whiteriver) grants the first purchaser additional rights under this warranty that exist alongside the contractual and statutory defect claims. The following stipulations do not waive, limit or change any contractual and statutory defect claims.

First Purchaser in the sense of this warranty is whoever purchased Whiteriver Laminate 12mm Milano Herringbone and 12mm Deco Plank (hereinafter referred to as "flooring") from a dealer as the first user of the product. It applies exclusively to the first installation.

### Warranty Conditions

This warranty applies to private and commercial installations with intensive use for all flooring types installed in accordance with the recommended class of use pursuant to ISO 10874, but not in conjunction with unusual chemical or mechanical stress. This warranty is non-transferable; only the first purchaser can make a claim under its terms.

### Warranty period

The warranty period is dependent on the product type and is stated on the insert enclosed with each package (30 years for private premises and 5 years for commercial premises). The warranty period begins on the date of purchase indicated on the receipt given to the first purchaser. Claims made under warranty do not extend the warranty period.

### Installation

The flooring must be installed in accordance with the installation instructions.

The installation instructions are included in the insert enclosed with every package.

Detailed installation instructions are available from your Whiteriver Flooring retailer and from [www.wrg.ie](http://www.wrg.ie)

## Laminate Flooring Warranty

12mm Milano Herringbone

12mm Deco Plank

### Treatment and use

Improper use and incorrect care and cleaning rule out any claims under warranty. Commercial premises must have an appropriate dirt-trap zone. The warranty is subject to compliance with the cleaning and maintenance instructions (included in the package). Normal signs of wear are not covered by this warranty.

### 3-fold warranty:

#### 1. Resistance to abrasion (pursuant to EN 13329)

A claim under warranty is justified if an area of at least one square centimeter of the decor layer has been completely rubbed off. Signs of abrasion around the panel edges are excluded from the warranty.

#### 2. Light-fastness

A claim under warranty is justified if the flooring is not light-fast pursuant to Level 6 of the "blue wool scale" (a method for calculating light-fastness). Light-fastness pursuant to EN 20105 describes the stability of the surface in conjunction with prolonged exposure to light. Accordingly, the flooring has a very good level of light-fastness. It is not, however, lightresistant. The consequences of natural ageing are therefore excluded from the warranty.

#### 3. Resistance to staining

A claim under warranty is justified if the flooring is damaged by the effect of the following substances: acetone (as contained in nail varnish remover, for instance), hand crème, alcoholic beverages, fruit and vegetable juices, fats, coffee, cola beverages and nail varnish.

### Exclusion

Natural signs of wear are excluded from the warranty if the entrance area is not equipped with dirt collecting doormats or if damage is caused by improper treatment, installation, use or storage or in the event of improper modification or repair.

### Claiming under warranty

Claims under warranty must be submitted in writing together with the original purchase receipt within 30 days of the occurrence of damage. Whiteriver reserves the right to view the affected flooring on site or to have it viewed by a third party prior to acknowledging the claim.

## Laminate Flooring Warranty

12mm Milano Herringbone

12mm Deco Plank

### Warranty services

Whiteriver Group can, at its discretion, choose to financially reimburse the first purchaser or to provide a replacement. Financial reimbursement is based exclusively on the fair value of the affected flooring. Fair value is derived from the age of the affected flooring in relation to the warranty period. The fair value of flooring in private premises decreases for:

Whiteriver Laminate Flooring 12mm Milano Herringbone by 1/30 every year

Whiteriver Laminate Flooring 12mm Deco Plank by 1/30 every year

of the original price excluding VAT. The fair value of flooring in commercial premises decreases each year by 1/5 of the original price excluding VAT. In the event of a replacement under warranty, replacements for the defective panels will be delivered to the first purchaser at the original point of sale free of charge. No other claims under warranty are permissible. In particular, claims under warranty do not include the cost of removal, installation, assembly, transport, storage and travel expenses. In the event the flooring is no longer available in the desired decor, the replacement shall be selected from the current product range.

Whiteriver Group Ltd.  
Drumcar Rd, Cluide,  
Dunleer,  
Co. Louth,  
A92 V8YN

Bernard Wogan (Director)

15.08.24

Signature



Date

15.08.24



# DECLARATION OF PERFORMANCE

DOP 1020-CPR-010-044571

**Whiteriver**  
wood for living

1. Unique identification code of the product-type:

1020-CPR-010-044571 For 12mm Deco Plank, 12mm Milano Herringbone laminate flooring.

2. Intended use or uses of the construction product, in accordance with the applicable harmonized technical specification, as foreseen by the manufacturer:

Intended use as floor covering in buildings (see EN 14041) according to the manufacturer's specifications.

3. Name, registered trade name or registered trade mark and contact address of the manufacturer as required pursuant to Article 11(5):

Whiteriver (wrg) Ltd,  
Cluide.,  
Dunleer,  
Co. Louth,  
Ireland.

4. Where applicable, name and contact address of the authorised representative whose mandate covers the tasks specified in Article 12(2):

Not applicable

5. System or systems of assessment and verification of constancy of performance of the construction product as set out in Annex V:

System 3

6. In case of the declaration of performance concerning a construction product covered by a harmonised standard:

Name of the notified test laboratory, that has issued the certificate of conformity of the factory production control, inspection reports and calculation reports (if relevant).

NB 1020 SGS – CSTC Standards Technical Services Co  
Xiamen Branch Testing Centre,  
No 31 Xianghong Road, Xiang An Torch Industrial Zone,  
Xiamen Fujian Province China

Notified Body



not applicable

certificate of constancy of performance

7. In case of the declaration of performance concerning a construction product for which a European Technical Assessment has been issued:

not applicable

8. Declared performance

| Essential characteristics      | Performance  | Harmonised technical specification |
|--------------------------------|--|------------------------------------|
| Reaction to fire               | Bfl-s1   | EN 14041: 2004/AC:2006             |
| Content of Pentachlorophenol   | None Detected  | EN 14041: 2004/AC:2006             |
| Formaldehyde Emissions         |  E1   | EN 14041: 2004/AC:2006             |
| Slip resistance                |  ≥0.3 | EN 14041: 2004/AC:2006             |
| Electrical behavior            | NPD  | EN 14041: 2004/AC:2006             |
| Water-tightness                | NPD  | EN 14041: 2004/AC:2006             |
| Durability of reaction to fire | NPD  | EN 14041: 2004/AC:2006             |
|                                | NPD: No performance determined   |                                    |

9. The performance of the product identified in points 1 and 2 is in conformity with the declared performance in point 8.

This declaration of performance is issued under the sole responsibility of the manufacturer identified in point 4

Signed for and on behalf of the manufacturer by:

BERNARD HOGAN (Director)

(name and function)

30.01.24 Dunleer Co. Ltd.

(place and date of issue)



(signature)